



PS 360-12

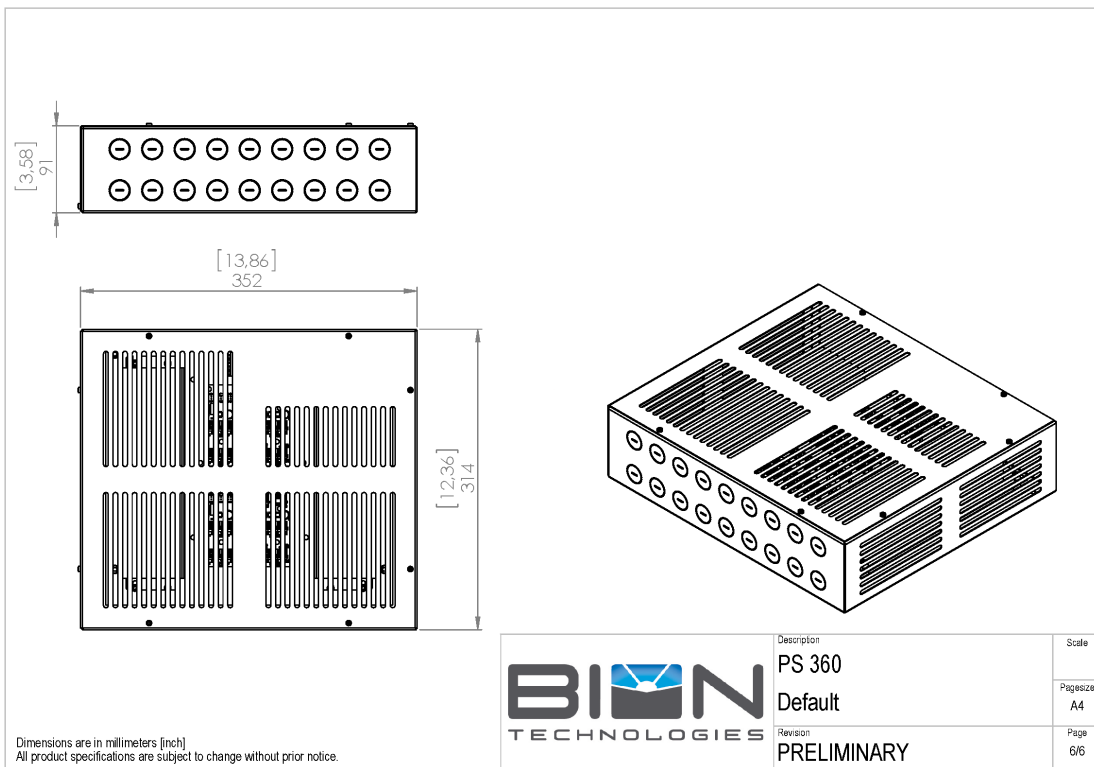
TECHNICAL DATASHEET

PS 360-12

Technical Data

Dimensions	350 mm x 320 mm x 90 mm [L x D x H] 13.78 in x 12.60 in x 3.55 in [L x D x H]
Control	DMX 2 x DMX in (RJ45 internal) 2 x DMX out (RJ45 internal)
Input Voltage	Power supply: internal 100 - 240, 277 VAC (50 - 60 Hz) 127 - 431 VDC
Power Consumption	Max. 500 W
Power Factor Correction	> 0,9 @ max. Load
Protection Class	I
Output Voltage	12 V 6 x 2x Terminalblock (max. 6 x 56 X-LED-DOTs total, max. 56 X-LED-DOTs per group)
Inrush	Max. 150 A
Operating Temperature Range	-20 °C / +40 °C -4 °F / +104 °F
Housing	Steel-sheet, powdercoated
Housing Color(s)	White (RAL 9010)
Weight	7,5 kg (16.53 lbs)
Ingress Protection	IP20
Environment	 indoor
Certification	

Engineering Drawing





Lindberghstrasse 15
86343 Koenigsbrunn
Tel: +49 (0)8231/95787-0
Fax: +49 (0)8231/95787-29
www.biontechnologies.com
info@biontechnologies.com

YouTube: <http://www.youtube.com/user/BIONTECHNOLOGIES>

© 2016, BION TECHNOLOGIS GMBH
All rights reserved / Subject to change / Specifications may change without notice