







# PS 360-12 XLR CON

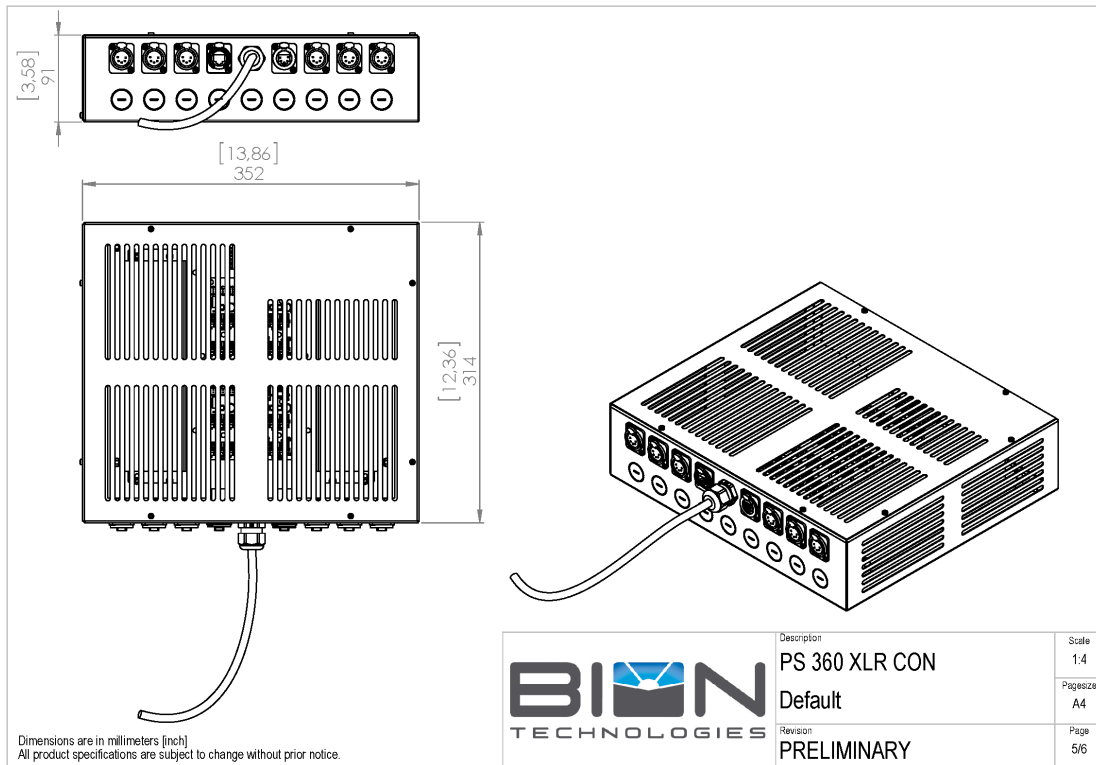
TECHNICAL DATASHEET

# PS 360-12 XLR CON

## Technical Data

Dimensions	350 mm x 320 mm x 90 mm [L x D x H] 13.78 in x 12.60 in x 3.55 in [L x D x H]
Control	DMX 2 x DMX in (RJ45 external) 2 x DMX out (RJ45 internal)
Input Voltage	Power supply: internal   100 - 240, 277 VAC (50 - 60 Hz)   127 - 431 VDC
Power Consumption	Max. 500 W
Power Factor Correction	> 0,9 @ max. Load
Protection Class	I
Output Voltage	12 V 6 x XLR 5pol (max. 56 X-LED-DOTs each outlet)
Inrush	Max. 150 A
Operating Temperature Range	-20 °C / +40 °C   -4 °F / +104 °F
Housing	Steel-sheet, powdercoated
Housing Color(s)	White (RAL 9010)
Weight	8,1 kg (17.86 lbs)
Ingress Protection	IP20
Environment	 indoor
Certification	  

# Engineering Drawing





Lindberghstrasse 15  
86343 Koenigsbrunn  
Tel: +49 (0)8231/95787-0  
Fax: +49 (0)8231/95787-29  
[www.biontechnologies.com](http://www.biontechnologies.com)  
[info@biontechnologies.com](mailto:info@biontechnologies.com)

YouTube: <http://www.youtube.com/user/BIONTECHNOLOGIES>