





tellus m installation box

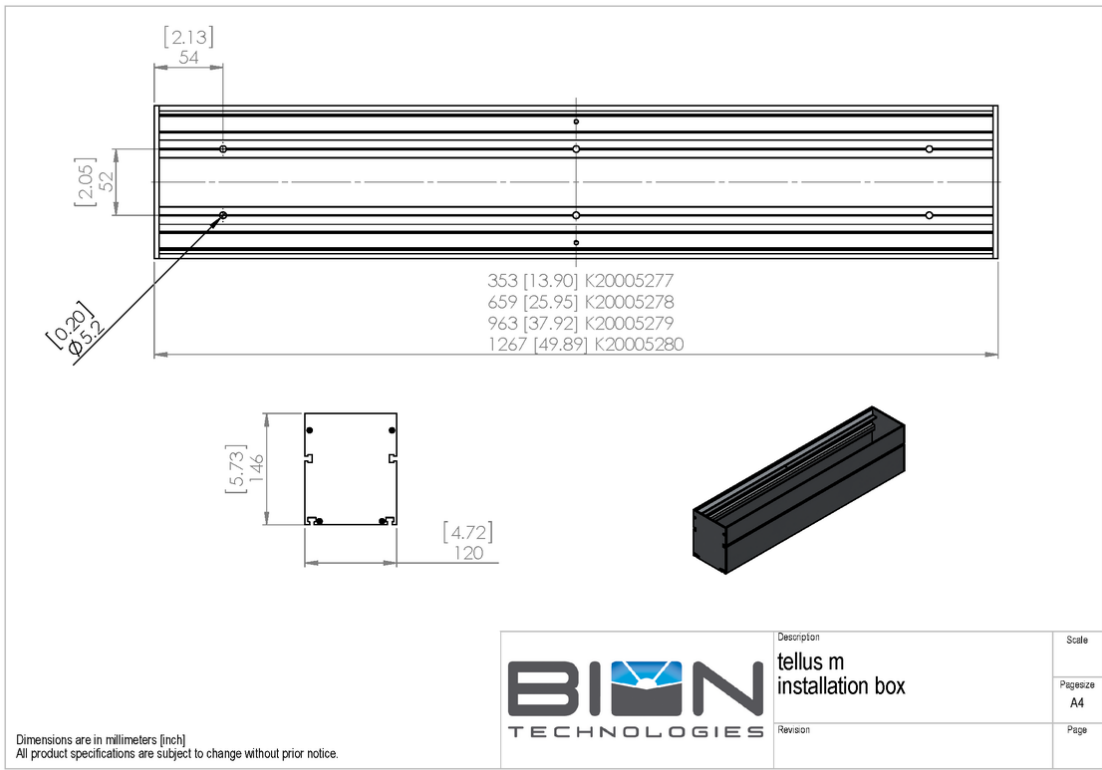
TECHNICAL DATASHEET

tellus m installation box

Technical Data

Dimensions	120 mm x 146 mm [W x H] 4.73 in x 5.75 in [W x H]
Standard Unit Lengths	114,5 mm (tellus point xs), 224,5 mm (tellus point s), 272,5 mm (tellus point m), 349,5 mm, 654,5 mm, 959,5 mm, 1264,5 mm 4.49 in (tellus point xs), 8.82 in (tellus point s), 10.71 in (tellus point m), 13.75 in, 25.75 in, 37.76 in, 49.77 in
Housing	Extruded aluminium profile
Housing Color(s)	 Aluminium anodized (Standard)
Weight	345 mm (13.59 in): 2.1 kg (4.63 lbs) 650 mm (25.60 in): 3.8 kg (8.38 lbs) 955 mm (37.60 in): 5.5 kg (12.13 lbs) 1260 mm (49.61 in): 7.2 kg (15.87 lbs)
Load	500 kg (1102 lbs)
Installation Depth	146 mm (5.75 ")
Certification	

Engineering Drawing



Project	Fixture#	Date
		Firm



Ordering Information

Choose the option that suits your needs and write its corresponding code on the appropriate line to form the product code.

tellus-m-installation-box- _____ - Y01 _____
FIXTURE LENGTH

FIXTURE LENGTH	
110	for 110 mm / 4.33 in (tellus point xs)
220	for 220 mm / 8.66 in (tellus point s)
1/272,5	for 268 mm / 10.55 in (tellus point m)
345	for 345 mm / 13.58 in
650	for 650 mm / 25.59 in
955	for 955 mm / 37.6 in
1260	for 1260 mm / 49.61 in

Sample Order Code: tellus m installation box

* Project-specific options are available - Please contact our Sales Representative for further information.



Lindberghstrasse 15
86343 Koenigsbrunn
Tel: +49 (0)8231/95787-0
Fax: +49 (0)8231/95787-29
www.biontechnologies.com
info@biontechnologies.com

YouTube: <http://www.youtube.com/user/BIONTECHNOLOGIES>

© 2016, BION TECHNOLOGIS GMBH
All rights reserved / Subject to change / Specifications may change without notice